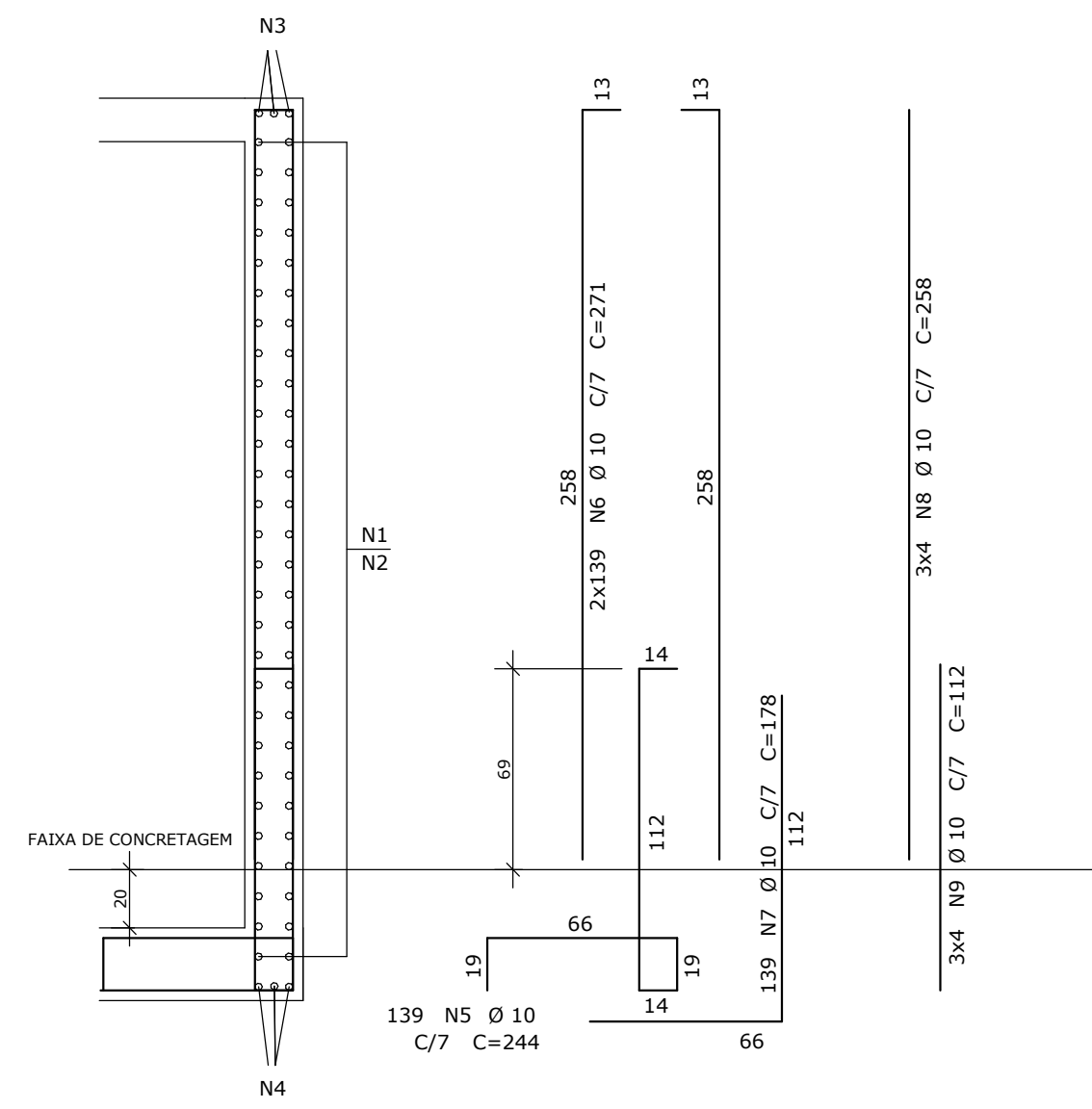
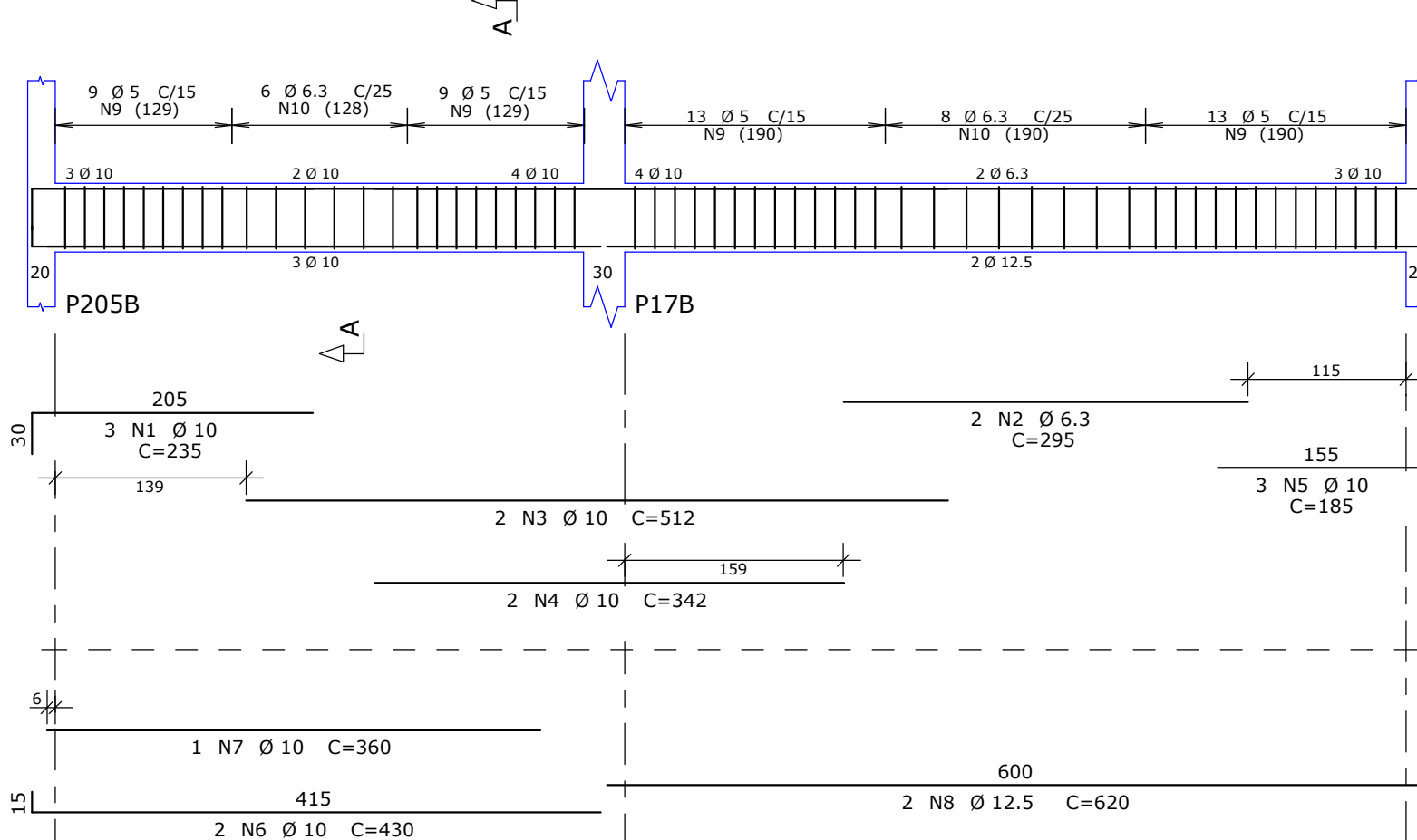


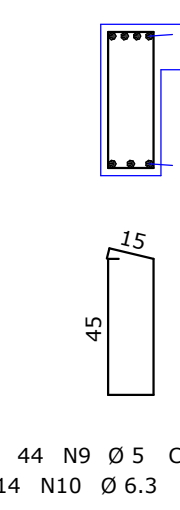
20/310



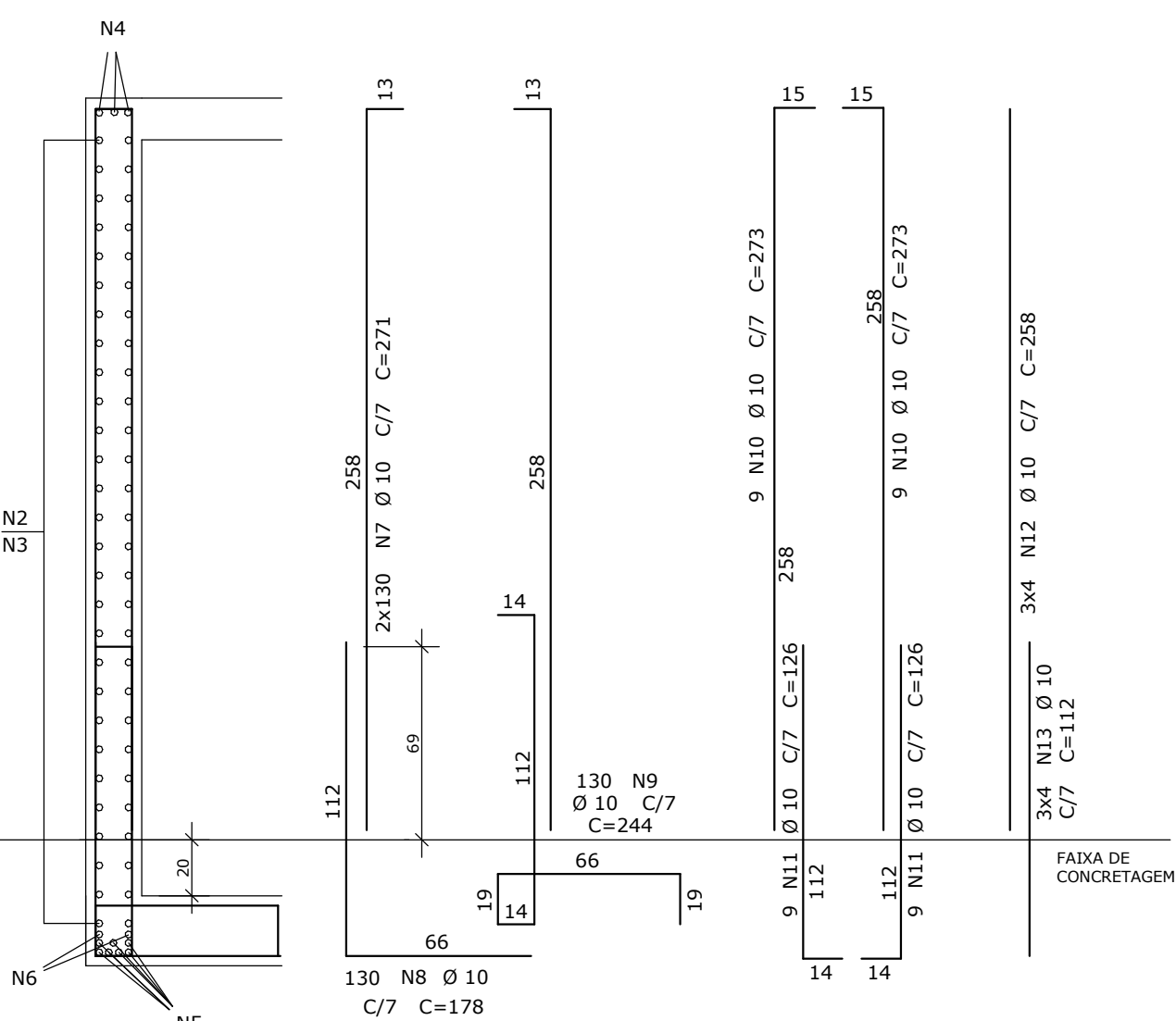
20X50



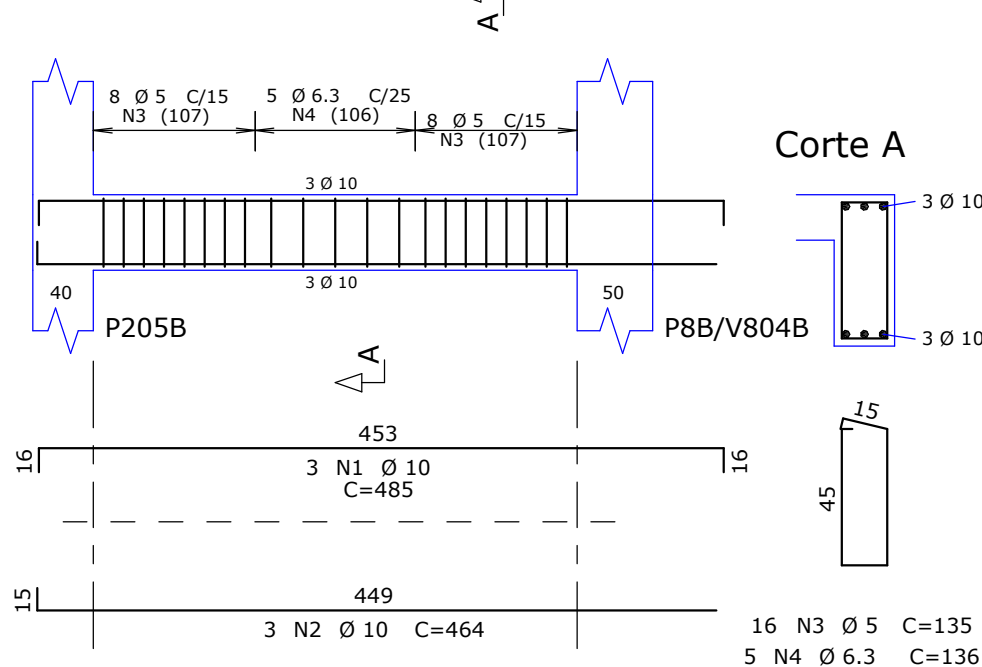
Corte A



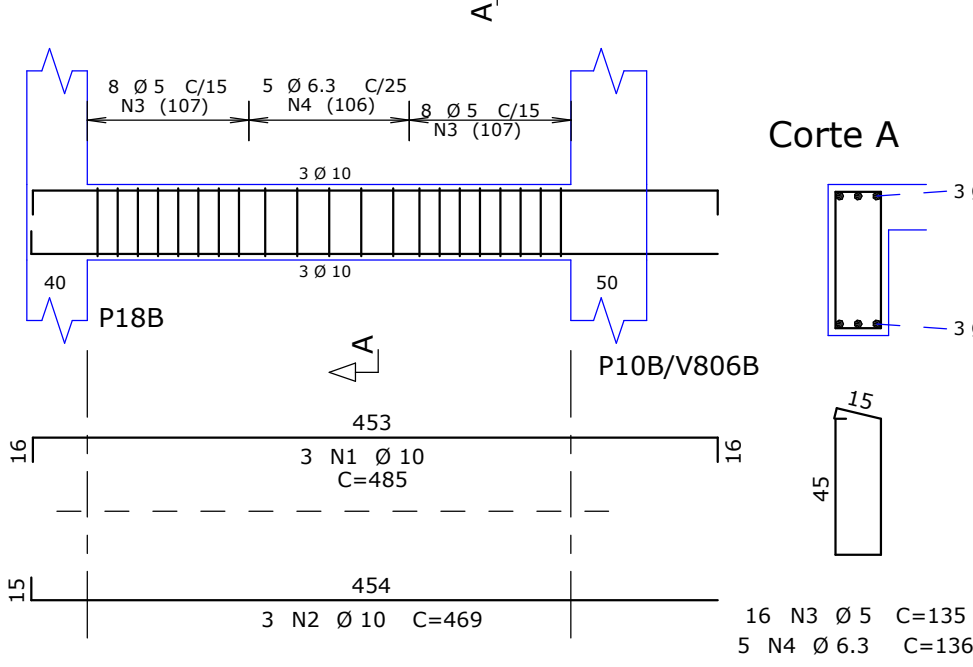
20/310



20X50

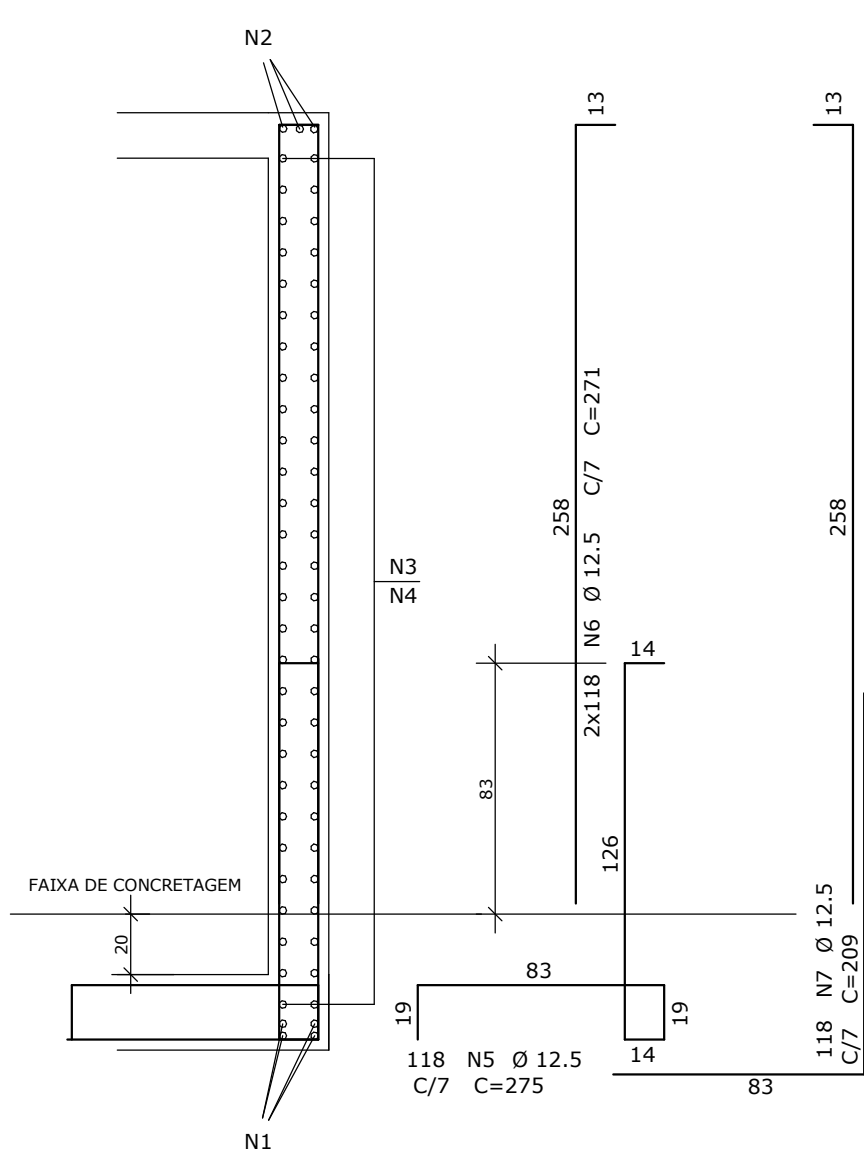


20X50

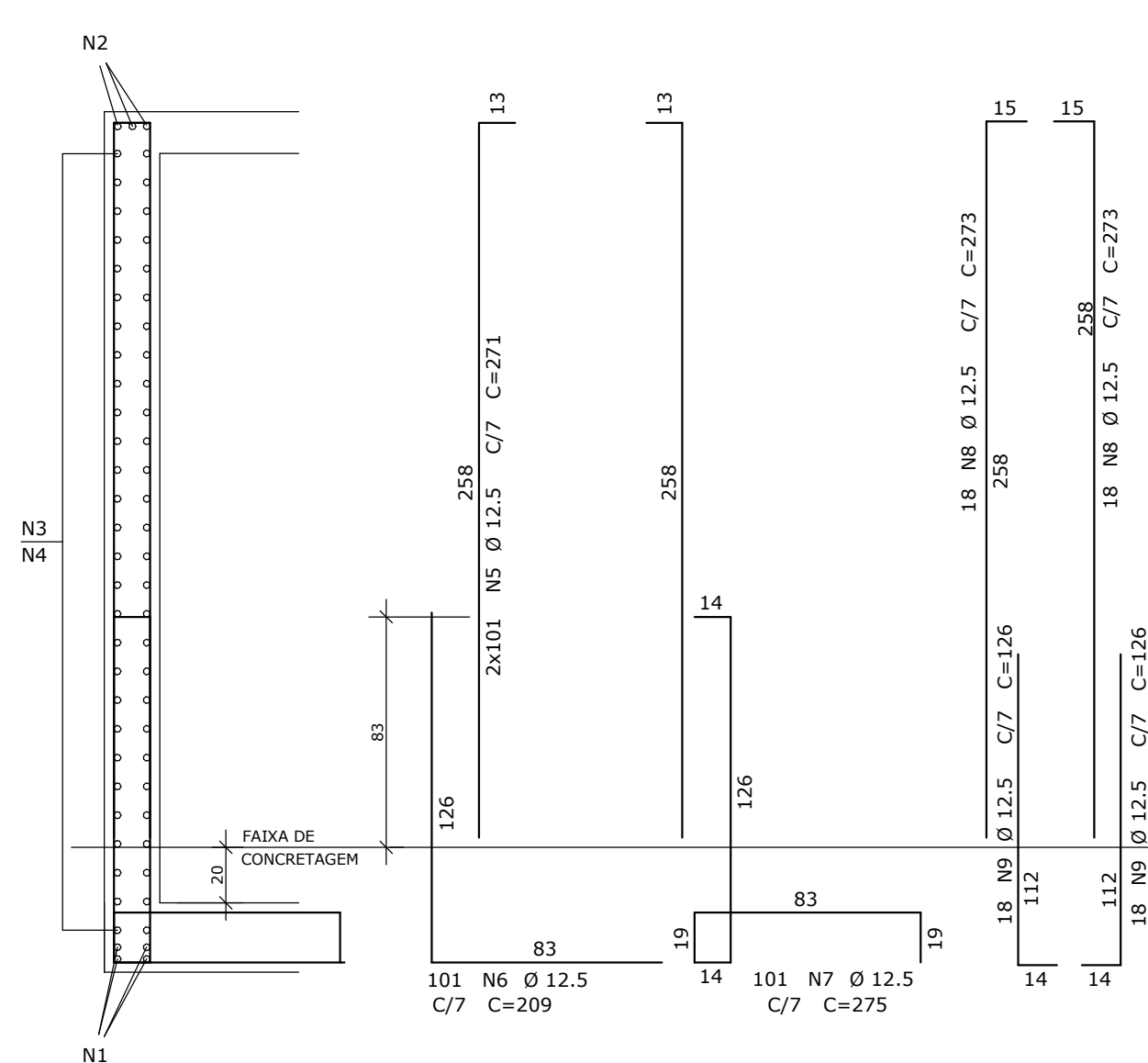


RESUMO DE AÇO			
AÇO	BIT mm	COMPR m	PESO kgf
60B	5	103	16
50A	6,3	39	9
50A	8	1758	694
50A	10	4476	2761
50A	12,5	3612	3479
50A	20	443	1092
Peso Total	60B =		16 kgf
Peso Total	50A =		8036 kgf

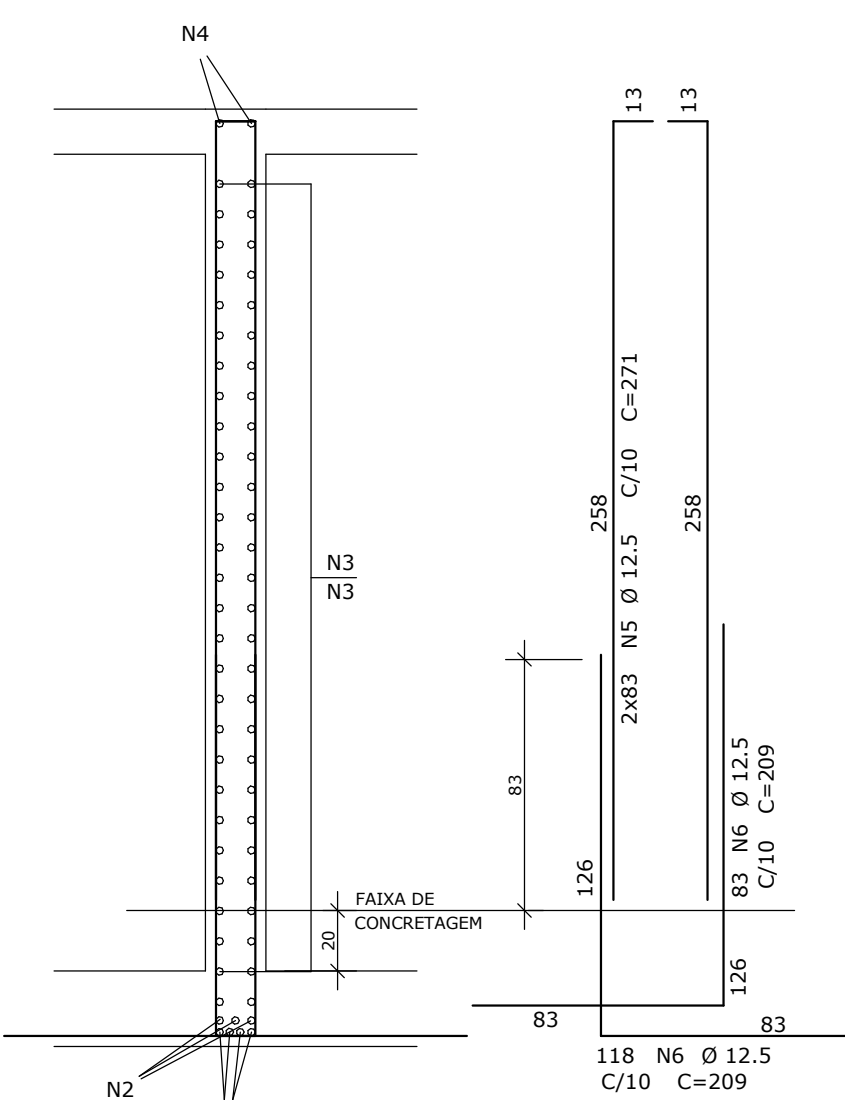
20/310



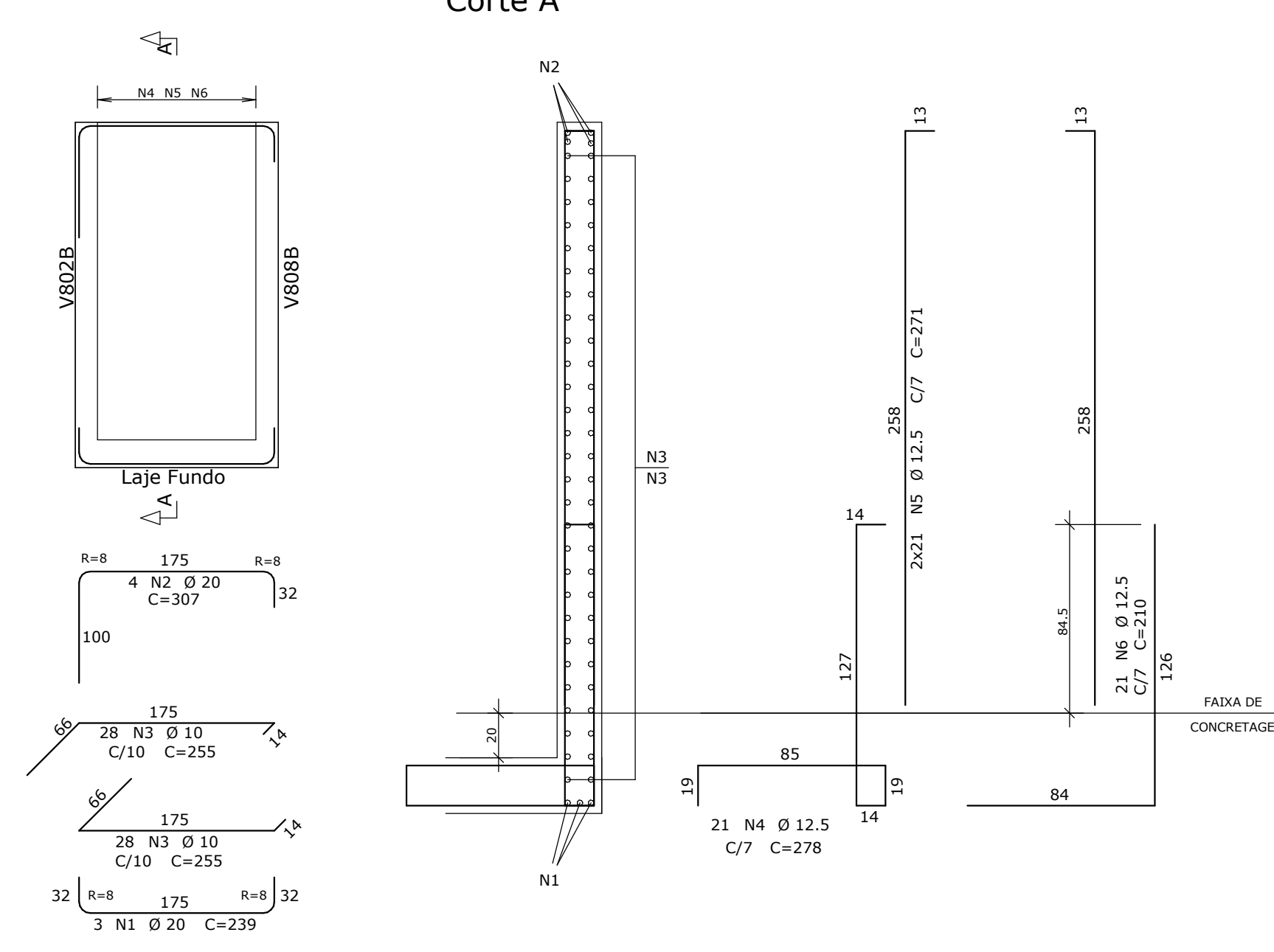
20/310



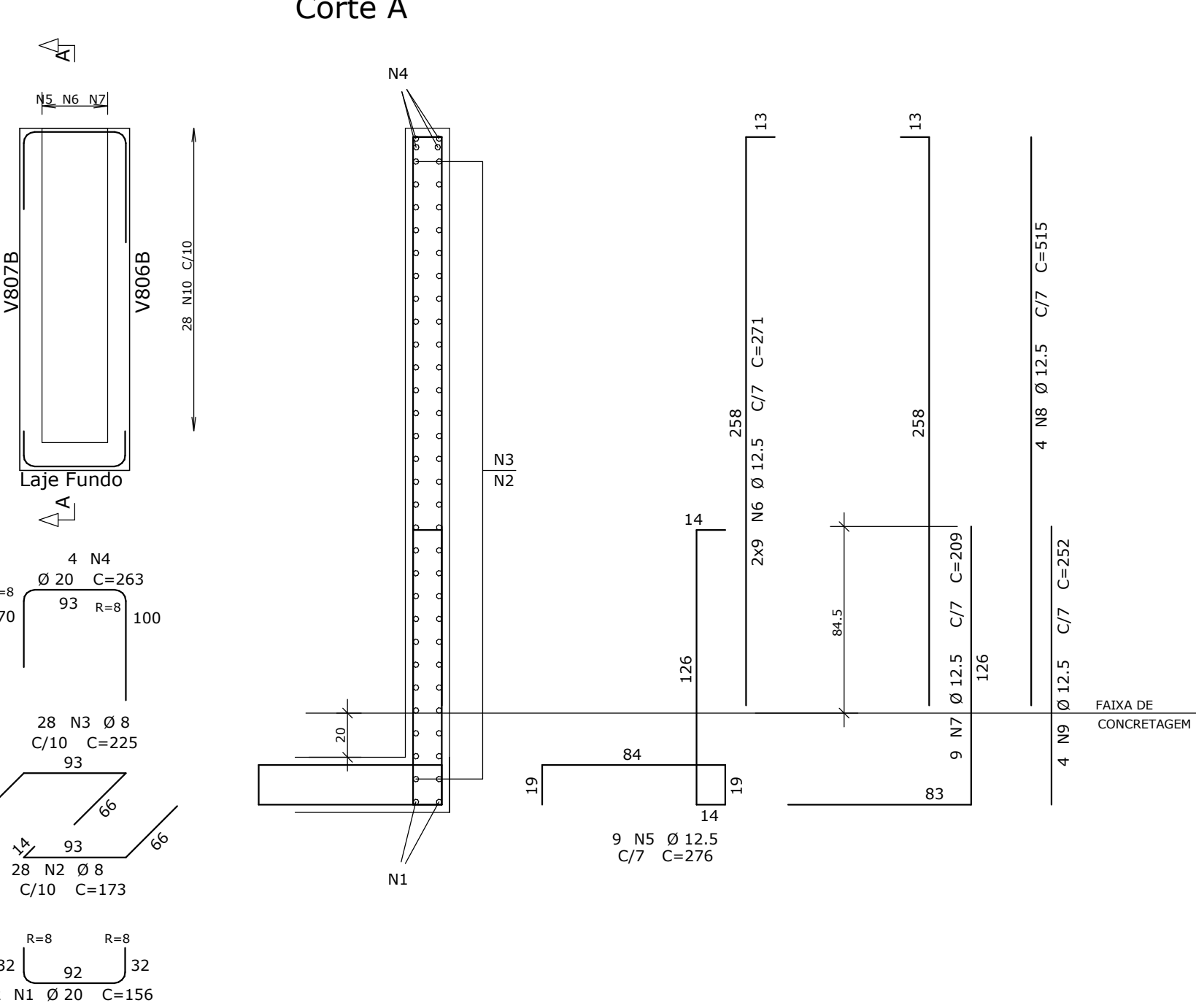
20/310



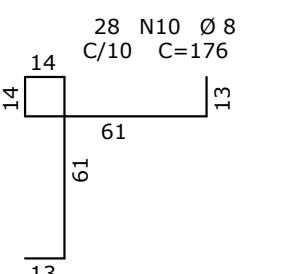
20/310



20/310



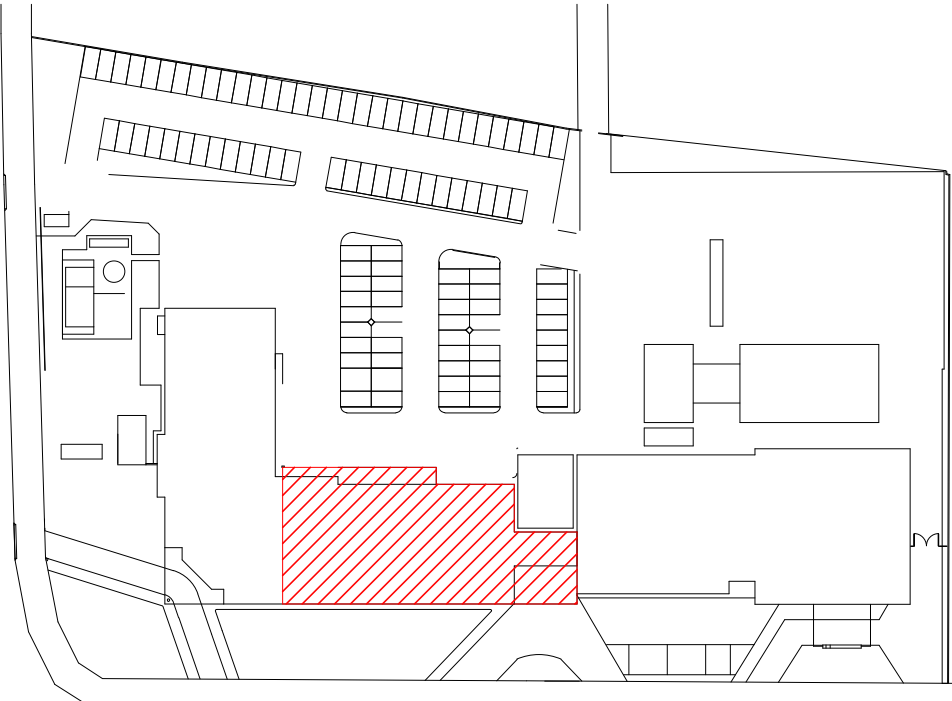
Technical drawing of a mechanical part, likely a bracket or support. The drawing shows a cross-section with a circular hole of diameter 12.5 mm. The part is labeled "V808B". Dimensions include a vertical section with a 14 mm width and a 61 mm height, and a horizontal section with a 61 mm width. The part is made of 28 N10 steel with a diameter of 8 mm, and the material is C/10 with a hardness of C=176.



1. UNIDADES EM CENTÍMETROS, NÍVEIS EM METROS, EXCETO ONDE INDICADO O CONTRÁRIO;
2. ESTE PROJETO ATENDE ÀS ESPECIFICAÇÕES DA NORMA NBR-6118:2014;
3. AS ARMADURAS DEVEM ESTAR LIMPAS, DE ACORDO COM O QUE SE ESTABELECE NAS NORMAS DE EXECUÇÃO, COM OS CORDOES DE ENLAÇAMENTO DE ACORDO COM O PROJETO, UTILIZANDO-SE DE POSICIONADORES E ESPACADORES ADEQUADOS, GARANTINDO OS COBERTIMENTOS;
4. ACOS: C50 ($f_y \geq 500\text{MPa}$) / C60 ($f_y \geq 600\text{MPa}$);
5. PREVER INSSERTA METÁLICAS PARA FIXAÇÃO DA ESTRUTURA METÁLICA, NOS ELEMENTOS PERTINENTES (VER PROJETO DE DETALHES METÁLICOS);
6. DEMAIS CONSIDERAÇÕES VÊ-SE PRANCHA DE FORMAS;
7. TODAS AS MEDIDAS E DIMENSÕES DEVEM SER CONFERIDAS NA OBRA.

PLANTA CHAVE

PLANTA CHAVE

[illegible]